



- MATERIALS**
- 1- Colorbond roofing Monument.
 - 2- Banded & Render Dune, Dulux.
 - 3- Aluminium Louvers.
 - 4- Render & Paint, White Duck, Dulux.
 - 5- Steel Awning, Monument, Colorbond.
 - 6- Toughened Glass balustrades.
 - 7- Face brick, Blue Rio, Boral.
 - 8- Architectural Frames, burnished Orange, Resene.
 - 9- Render & Paint, Half White Duck, Dulux.
 - 10- Aluminium windows, Precious Silver Pearl, Colorbond.

D FOR GENERAL REVIEW 2012.03.14
B FOR GENERAL REVIEW 2011.12.21
A DA AMENDED 2011.09.22
REV Description

MACKENZIE ARCHITECTS
Chartered Architect No 6033
ABN 46 129 502 772
4/2 The Postern
Castlereagh NSW 2068
Phone: (02) 9967 9966
Fax: (02) 9967 9977
www.mackenziearchitects.com.au
info@mackenziearchitects.com.au

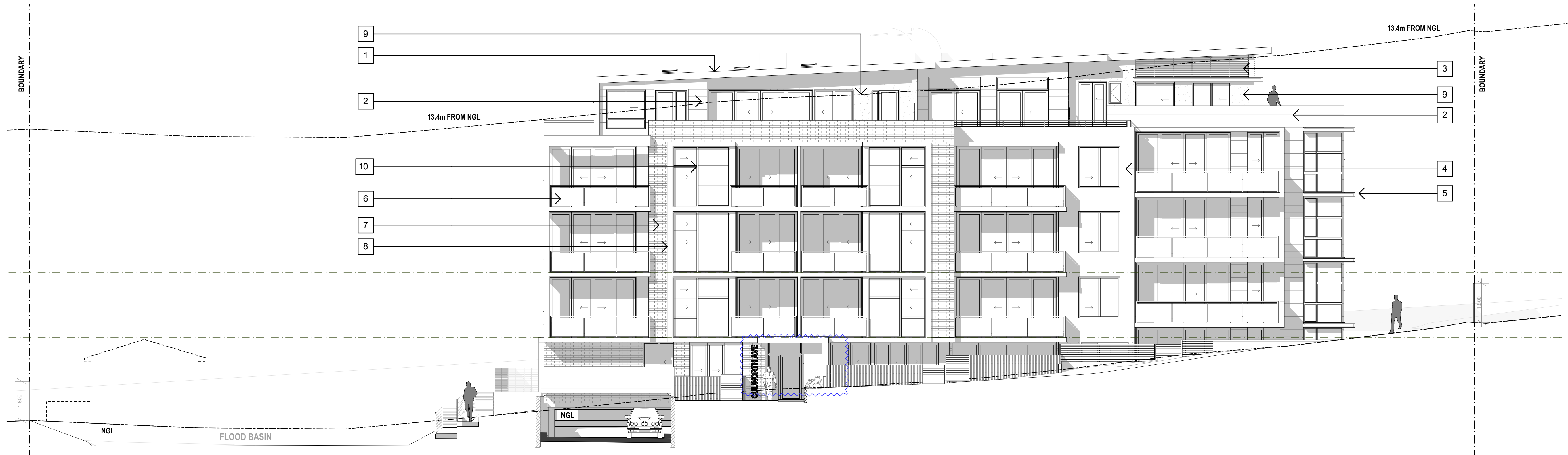
Client
THE RALAN GROUP
Residential Building
36-40A Culworth Ave, Killara
NSW 2071

Drawing Title
Elevations - Elevations 01
East-Front Fence, North, South

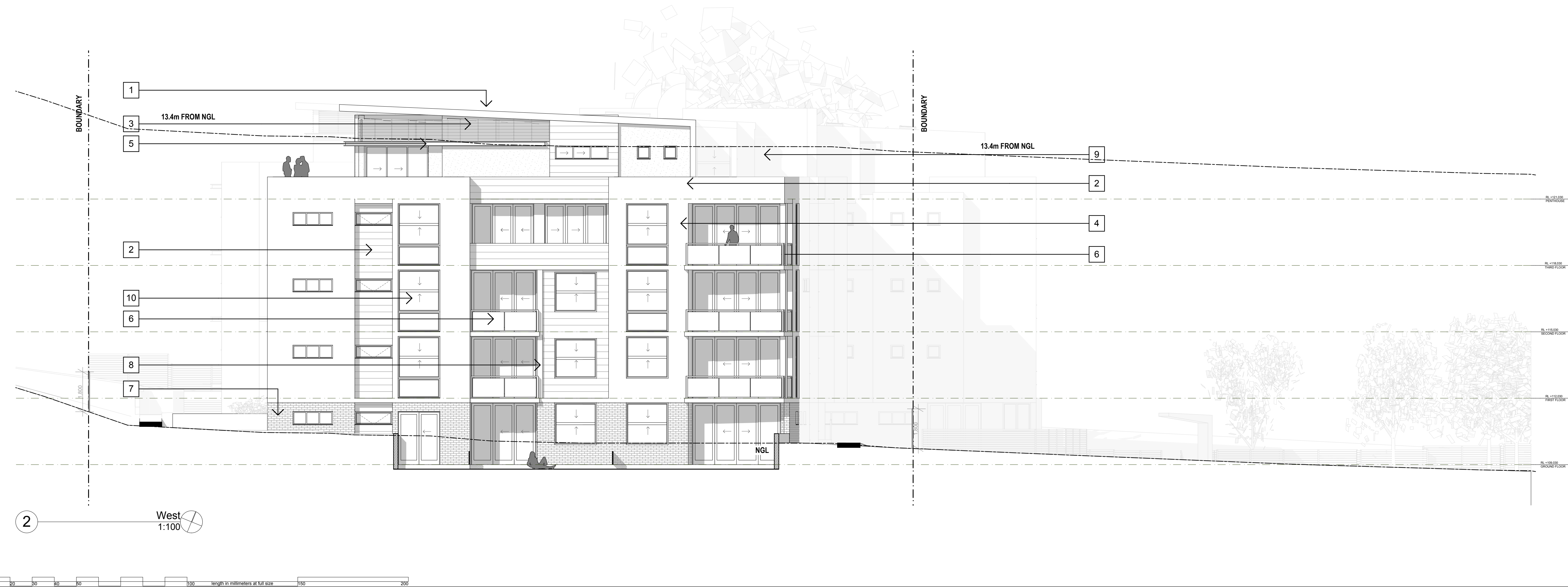
Scale: as noted Date: 11.01.2011

Project No: **09/17** Drawing No: **SK-10 [D]**
Drawn: A.S. Checked By: D.M.

Copyright
Mackenzie Architects is the owner of the copyright in this drawing. It is not to be used, reproduced or copied in whole or part without prior written consent of Mackenzie Architects.
Copyright Mackenzie Architects. All rights reserved.



- MATERIALS**
- 1- Colorbond roofing-Monument.
 - 2- Banded & REndur Dune, Dulux
 - 3- Aluminium Louvers.
 - 4- Render & Paint, White Duck, Dulux
 - 5- Steel Awning, Monument, Colorbond.
 - 6- Toughened Glass balustrades.
 - 7- Face brick, Blue Rio, Boral.
 - 8- Architectural Frames, burnished Orange, Resene.
 - 9- Render & Paint, Half White Duck, Dulux.
 - 10- Aluminium windows, Precious Silver Pearl, Colorbond



D	FOR GENERAL REVIEW	2012.03.14
B	FOR GENERAL REVIEW	2011.12.21
A	DA AMENDED	2011.09.22
rev	description	date

MACKENZIE ARCHITECTS
Chartered Architect No.6033
ABN 46 129 502 772
4/3 The Postern
Castlecrag NSW 2068
Phone: (02) 9967 9966
Fax: (02) 9967 9977
www.mackenziearchitects.com.au
info@mackenziearchitects.com.au

Client
THE RALAN GROUP
Job:
Residential Building
36-40A Culworth Ave. Killara
NSW 2071

Drawing Title:
Elevations - Elevations 02
West, East

Scale: as noted	Date: 11.01.2011
Project No: 09/17	Drawing No.: SK-11 [D]
Drawn: A.S	Checked By: D.M
Pict Date: 22/03/2012	

Copyright
Mackenzie Architects is the owner of the copyright subsisting in these drawings, plans, designs and specifications. They must not be used, reproduced or copied in whole or part without prior written consent of Mackenzie Architects.
Copyright Mackenzie Architects. All rights reserved

MACKENZIE ARCHITECTS